



"I feel like I can enjoy my life again. I just wish I hadn't waited so long."

- Maria Leticia Duarte

What can NAVIO® Robotics-assisted partial knee replacement mean for you?

Consistent results¹
Accurately placed implants¹
Customized planning
No CT-scan required

Partial knee replacement offers several benefits over total knee replacement:

Less pain²
A more normal feeling knee²
Smaller incisions³
Quicker rehabilitation²

What's my next step?

Ask your surgeon:

- Is my knee pain caused by osteoarthritis?
- Is NAVIO robotics-assisted partial knee replacement right for me?
- How does my age, lifestyle and overall health affect my treatment options?
- What are the risks associated with surgery?

Find out more about beating pain and returning to the activities you love.



Mark Bridges, MD



Orthopaedic Associates USA
350 N. Pine Island Rd., Suite 200
Plantation, FL 33324
www.oausa.com



Marc Lalenti, MD



Howard Gelb, MD



9980 Central Park Blvd North, Suite 222
Boca Raton, FL 33428
www.gelbmd.com



PARKCREEK
Surgery Center



DELRAY BEACH
Surgery Center

The NAVIO System is not for everyone. Children, pregnant women, patients who have mental or neuromuscular disorders that do not allow control of the knee joint, and morbidly obese patients should not undergo a NAVIO procedure. Knee replacement surgery is intended to relieve knee pain and improve knee functions. However, implants may not produce the same feel or function as your original knee. There are potential risks with knee replacement surgery such as loosening, fracture, dislocation, wear and infection that may result in the need for additional surgery. Longevity of implants depends on many factors, such as types of activities and weight. This information is for educational purposes only and is not intended as medical advice. Consult your physician for details to determine if Navio robotics-assisted procedure is right for you.

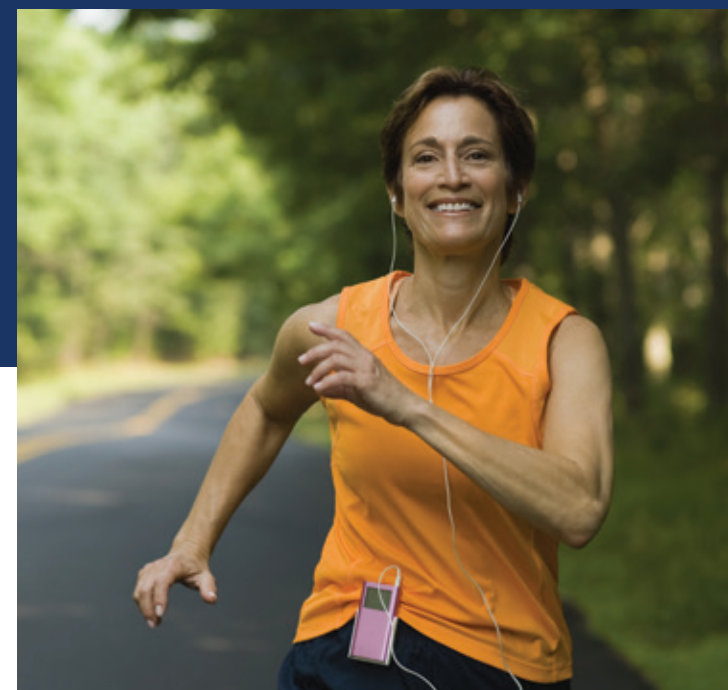
The NAVIO System is intended to assist the surgeon in providing software-defined spatial boundaries for orientation and reference information to anatomical structures during orthopedic procedures. The NAVIO System is indicated for use in surgical knee procedures, in which the use of stereotactic surgery may be appropriate, and where reference to rigid anatomical bony structures can be determined. These procedures include unicompartmental knee replacement (UKR), patellofemoral arthroplasty (PFA), and total knee arthroplasty (TKA). The NAVIO system is indicated for use with cemented implants only.

¹ Lonner J., Smith J., et al., High Degree of Accuracy of a Novel Image-free Handheld Robot for Unicompartmental Knee Arthroplasty in a Cadaveric Study. Clin Orthop Relat Res 2014 Jul 8. Epub 2014 Jul 8.
² Hall et al., "Unicompartmental Knee Arthroplasty (Alias Uni-Knee): An Overview With Nursing Implications," Orthopaedic Nursing, 2004; 23(3): 163-171.
³ Repicci, JA, et al., "Minimally invasive surgical technique for unicompartmental knee arthroplasty," J South Orthopaedic Association, 1999 Spring; 8(1): 20-7.

*Trademark of Smith & Nephew.

15170 V1 07/18

Does knee pain keep you from what you love?



The NAVIO Surgical System can help your surgeon **get you back in action** with accurate and precise partial knee replacement.



PARKCREEK
Surgery Center



DELRAY BEACH
Surgery Center

Knee pain makes a big difference in your life. So can NAVIO[®] Robotics-assisted Partial Knee Replacement.

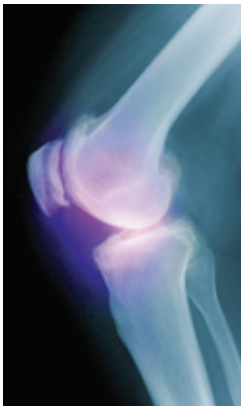
What causes knee pain?

Millions of people suffer from osteoarthritis, which occurs when there is a breakdown in the cushioning cartilage between joints, such as the knee. When this cartilage wears down, bones begin to rub against each other causing pain, swelling, stiffness and damage to other parts of the knee.

What can be done about it?

While there is no cure for osteoarthritis, there are multiple treatment options to manage pain and potentially delay the progression of the disease. Your doctor may prescribe exercises, weight loss or medication. If osteoarthritis progresses to an advanced stage and is causing severe pain, surgery may be the best option.

Instead of masking the pain or accommodating limited mobility, partial knee replacement—where the surgeon replaces only the diseased part of the knee — is a solution that can benefit sufferers of early to mid-stage osteoarthritis. While total knee replacement is the most common surgical treatment for osteoarthritis, ask your doctor if partial knee replacement is right for you. If so, there is advanced technology for partial knee replacement that can help your surgeon perform the procedure with a high level of accuracy and precision!



What is NAVIO Robotics-assisted Partial Knee Replacement?

The NAVIO System is an advancement in the way orthopedic surgeons perform partial knee replacement. The system works in conjunction with the surgeon's skilled hands to achieve the precise positioning of the knee implant based on each patient's unique anatomy. This added level of accuracy can help improve the function, feel and potential longevity of the partial knee implant.

Robotics-assisted handpiece designed to enable access through smaller incisions

Advanced instrumentation designed to enforce bone resurfacing within the surgeon-defined plan

Computer assistance designed to ensure consistent and accurate results



How does the NAVIO System achieve these results?

The NAVIO System provides robotic assistance through an advanced computer program that relays precise information about your knee to a robotics-assisted handpiece used by the surgeon during the procedure. By collecting patient-specific information, boundaries are established for the robotics-assisted handpiece so the surgeon can remove the damaged surfaces of your knee, balance your joint, and position the implant with great precision!



Advanced planning software allows the surgeon to tailor the procedure to each patient.